

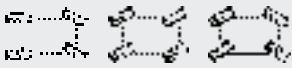
MHT & MHT-X14350

TECHNICAL DATA SHEET



www.manitou.com

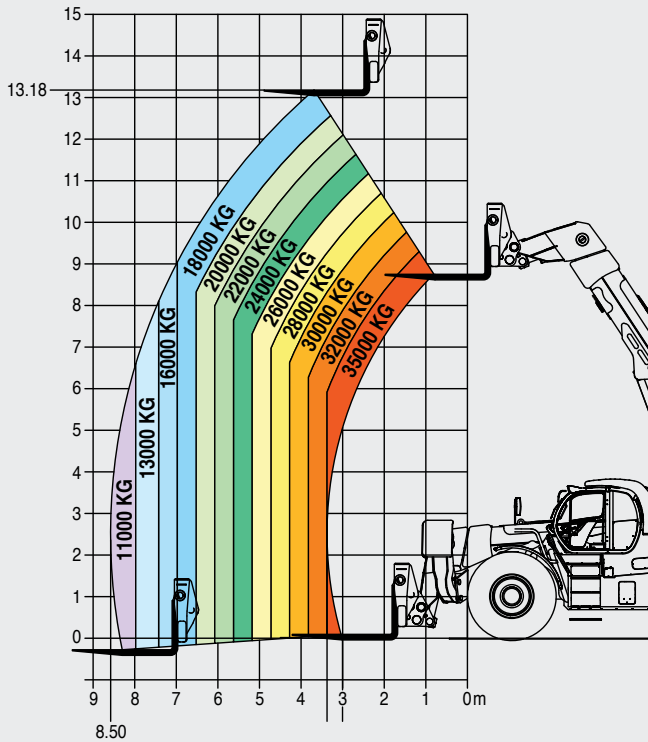
MHT & MHT-X 14350

| | MHT 14350 | MHT-X 14350 |
|---|---|-----------------------|
| Lifting | | |
| Max. capacity at 1200 LC | 35000 kg | |
| Max. lifting height | 13.60 m | |
| Max. outreach | 8.5 m | |
| Tyres | 24.00/R35 | |
| Braking | | |
| Service brake | Oil-bath multiple-disc brakes hydraulically assisted on both axles | |
| Parking brake | Automatic Negative Parking brake | |
| Engine | | |
| Type | MERCEDES-OM 936 LA (Stage IV / Tier IV final) OM 926 LA (Stage IIIa / Tier III) | |
| Displacement | 6 cylinders 7.2 liters | |
| Power | 350 HP / 260 kW | 326 HP / 240 kW |
| Max. torque | 1400 Nm / 1200-1600 rpm | 1300Nm /1300-1600 rpm |
| Battery | 24V - 100Ah | |
| Laden drawbar pull | 33000 daN | |
| Gradability | 40% | |
| Transmission | | |
| | Hydrostatic with powershift 3/3-HSE 2+3 | |
| Reversing shift | electromagnetic | |
| Number of gears (forward/reverse) | Automatic 3/3 | |
| Max. travel speed (may vary according to applicable regulations) | 25 kph | |
| Steering mode | 4 wheel steer - 3 Steering Modes  | |
| Controls | JSM® Joystick multi - function | |
| Hydraulics | | |
| Load sensing Pump | 400 l/min - 350 bar | |
| Capacities | | |
| Hydraulic oil | 760 l | |
| Fuel | 720 l | |
| Unladen weight (with forks) | 67900 kg | |
| Dimensions | | |
| Overall width | 3.53 m | |
| Overall height | 3.82 m | |
| Overall length to carriage | 10.99 m | |
| Turning radius | 7.31 m | |
| Ground clearance | 0.74 m | |
| Overall length to carriage | 5.86 m | |
| Inside tyre width | 1.87 m | |
| Overall width | 2.28 m | |
| Overall width (stabilizers lowered) | 2.28 m | |
| Overall height | 2.42 m | |
| Standard forks (length x width x thickness) | 2440 x 300 x 135 mm | |
| Turning radius (over tyres) | 3.85 m | |
| Frame levelling | +/- 8° | |
| Safety | Load monitoring system - (crane norms) Attachment recognition system (E-Reco) Hydraulic locking attachment system | |
| Noise and vibration | | |
| Noise at driving position (LpA) | 80 dB | |
| Environmental noise (LwA) | 107 dB | |
| Vibration to whole hand/arm | <2.5 m/s ² | |

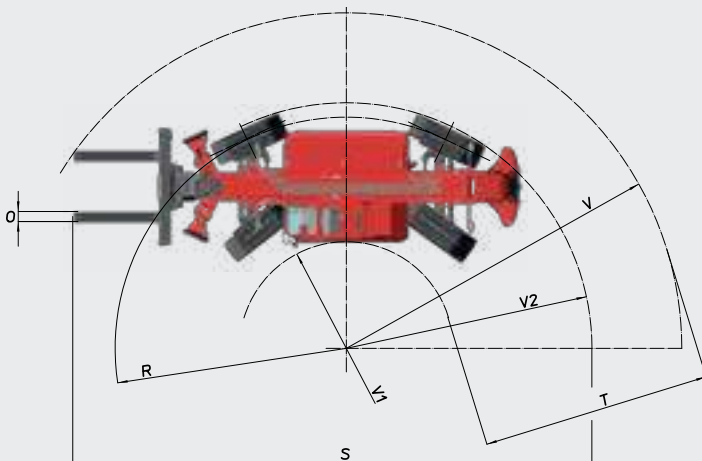
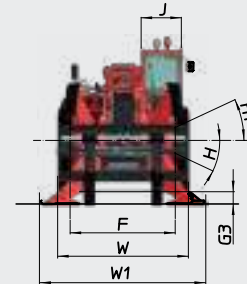
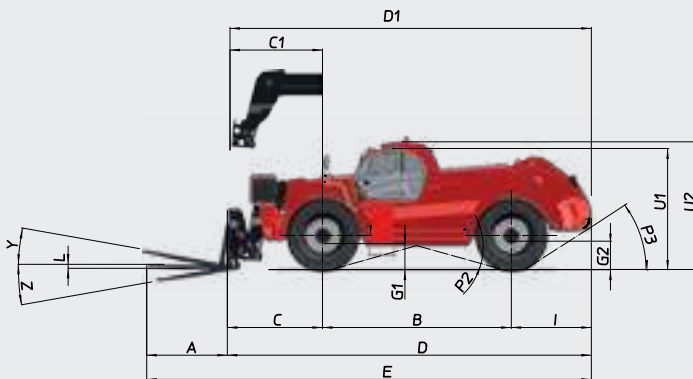
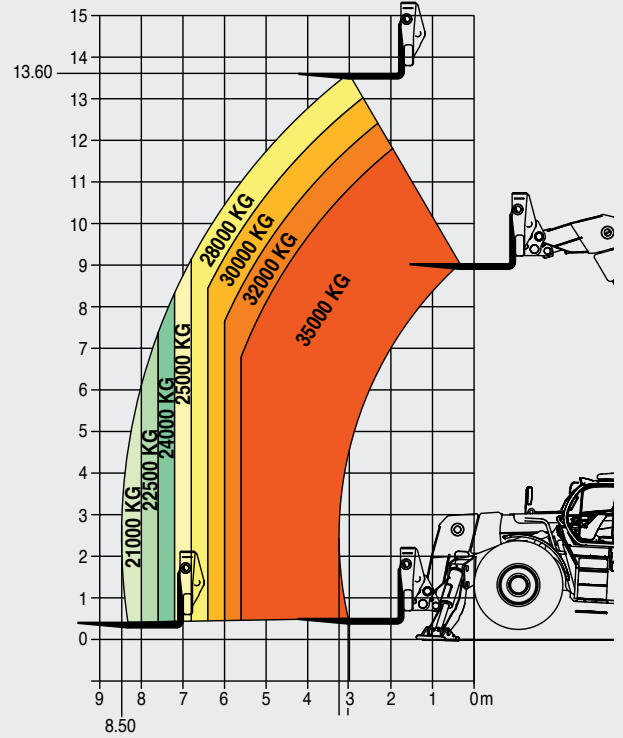
MHT & MHT-X 14350

Rough terrain load chart standard EN1459 annex B

Machine on tyres with forks



Machine on stabilizers with forks



| mm | MHT/MHT-X 14350 |
|----|-----------------|
| A | 2445 |
| B | 5700 |
| C | 2825 |
| C1 | 2615 |
| D | 10936 |
| D1 | 10726 |
| E | 13390 |
| F | 2852 |
| G1 | 687 |
| G3 | 332 |
| H | 8° |
| H1 | 8° |
| I | 2411 |
| J | 1094 |
| L | 135 |

| mm | MHT/MHT-X 14350 |
|----|-----------------|
| O | 300 |
| P2 | 31° |
| P3 | 32° |
| R | 6918 |
| S | 15489 |
| T | 6910 |
| U1 | 3651 |
| U2 | 3826 |
| V | 10072 |
| V1 | 3169 |
| V2 | 7328 |
| W | 3530 |
| Y | 15° |
| Z | 107° |

This brochure describes versions and configuration options for Manitou products which may be fitted with different equipment. The equipment described in this brochure may be standard, optional or not available depending on version. Manitou reserves the right to change the specifications shown and described at any time and without prior warning. The manufacturer is not liable for the specifications given. For more information, contact your Manitou dealer. Non-contractual document. Product descriptions may differ from actual products. List of specifications is not comprehensive. The logos and visual identity of the company are the property of Manitou and may not be used without authorisation. All rights reserved. The photos and diagrams contained in this brochure are provided for information only.

MANITOU BF SA - Limited company with board of directors - Share capital: 39,547,824 euros - 857 802 508 RCS Nantes



Your nearest **MANITOU** dealer:



Head office:
B.P. 249 - 430 rue de l'Aubinière - 44158 Ancenis Cedex - France
Tel: 00 33 (0)2 40 09 10 11 - Fax: 00 33 (0)2 40 09 10 97
www.manitou.com