

Masted  
Trucks

**M26/M30  
M40/M50**  
**EURO 2**

## **Rough terrain specialist**

- Capability from 2600 kg to 5000 kg
- Lifting height from 3 m to 6 m
- 2- or 4-wheel drive models





# ***M: true rough terrain trucks***

*The M trucks, from 2.6 to 5 tonnes of capability, enable you to transport heavy, long or bulky loads wherever you wish.*

*Whether on steep slopes or uneven ground, you will appreciate the benefit of the stability and unequalled traction of these rough terrain trucks from the MANITOU range.*



## **• Robust first and foremost**

Uniquely for this kind of truck, the M series are fitted with a solid bloc chassis that is perfectly able to withstand the effects from twisting on rough terrain, with a suspended cab that protects the driver from vibrations, with a steerable rear oscillating axle to give easy manoeuvring on muddy ground and a load absorber as standard to protect the load from damage on difficult ground.





## • Power serving effectiveness

To be effective in the yard the operator must be fast and precise, This is why the M trucks are powerful and fitted with a Perkins 1104 C 44 engine that complies with the EURO 2 standard. Its 4 direct injection cylinders develop 84 hp / 61.5 kW at a nominal engine speed of 2200 rpm; combined with the torque converter transmission the operator is able to choose a travelling gear on stable ground or engine torque for traction on unstable ground (4-speed gearbox).





## ● Unequalled performance

*Popular for their extraordinary ability to drive over obstacles and their ground-holding in muddy conditions, **the M trucks with capacities from 2.6 T to 5 T can carry out a variety of duties in complete safety.***

*Designed to give optimum stability, with a wide gauge that can handle long loads in complete safety; with high ground clearance and with wide diameter wheels at the front to cross obstacles more easily, good weight distribution over the axles and a hydraulic differential lock system (optional on the 4-wheel drive) to control the truck under all conditions.*



## ● Extra comfort

The spacious enclosed cab with tinted glass fitted as standard, heating, comfortable adjustable seat, efficient dashboard with control lights, and a system that automatically locks the doors open to give ventilation in hot weather mean that the operator can work effectively in all weathers.





In addition there are the advantages of the ergonomically designed controls placed within easy reach, and of increased safety given by the exceptional visibility round the mast and on the sides of the truck which enable the driver to see his load and surroundings



## • **Simpler maintenance**

The fully opening bonnet gives complete access to the engine, gauges, filters and greasers to keep down maintenance time and encourage routine maintenance














## • **Versatility under all circumstances**

Available as 2 or 4-wheel drive, the M range includes 6 models: M26.2, M30.2, M26.4, M30.4, M40.4, M50.4. The exceptional traction of the M trucks enables you to be as effective with forks in the yard, with a bucket for picking up bulk loads, a skip for concrete, or wood clamp when dealing with timber.

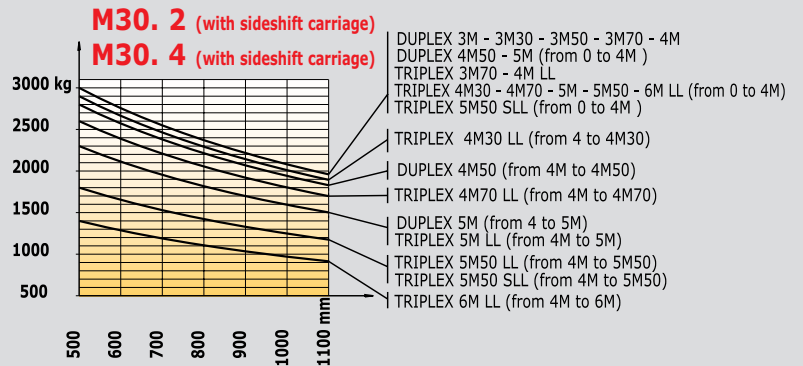
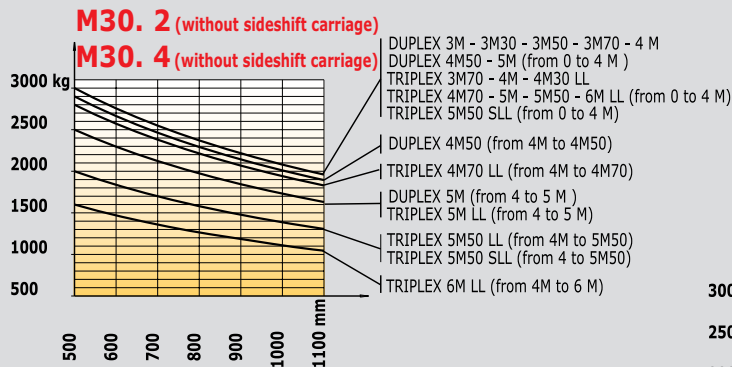
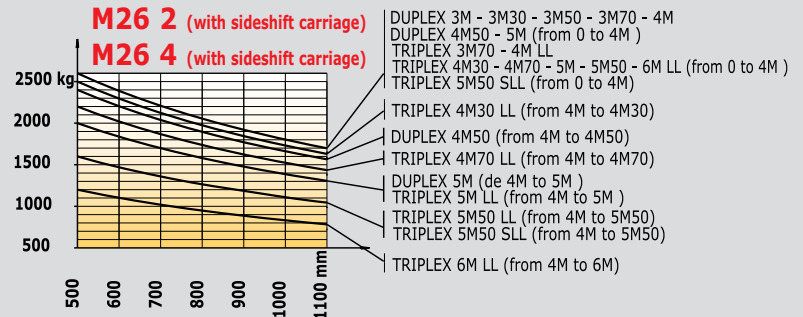
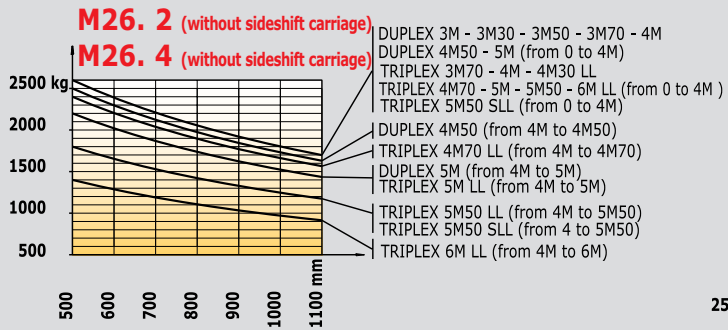


## Tyres

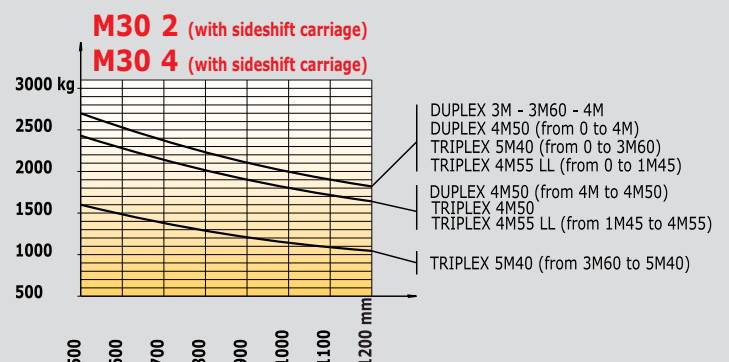
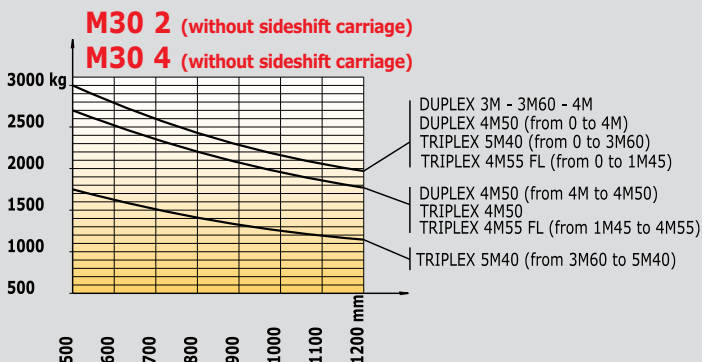
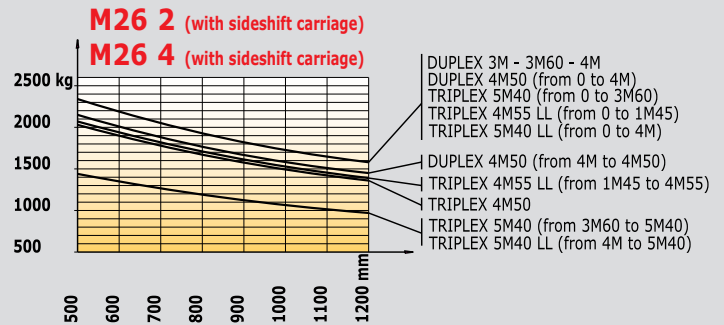
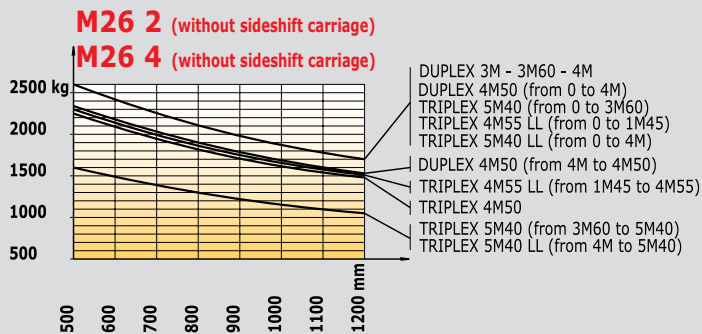
### M26.2/M26.4/M30.2/M30.4/M40.4/M50.4

|                  |                          | Version              |       | Tread                                      | Width tyre (mm) | Overall width to the tyres (mm) | Profile   |
|------------------|--------------------------|----------------------|-------|--|-----------------|---------------------------------|---|
| Standard fitting | M26.2/26.4<br>M30.2/30.4 | agricultural version | FRONT | 16.5/85-24 TL<br>SGI 8 PR                  | 435             | 2105                            |    |
|                  | M26.2                    | Industrial version   | REAR  | 9.00 - 16 EM5<br>10PR                      | 275             | 1795                            |    |
|                  | M30.2                    | Industrial version   | REAR  | 10 R 17.5 XZT                              | 265             | 1785                            |    |
|                  | M26.4<br>M30.4           | agricultural version | REAR  | 10.5/80 - 18 TG 42<br>Tubeless 10 PR       | 275             | 2035                            |    |
|                  | M40.4<br>M50.4           | All purpose          | FRONT | 18 R 22,5 XF<br>Tubeless* (445/65 R 22,5)  | 450             | 2070                            |  |
|                  | M40.4<br>M50.4           | All purpose          | REAR  | 12,5/80 R18<br>XM 37 Tubeless              | 340             | 2080                            |  |
| Optional fitting | M26.2<br>M30.2           | Sand version         | FRONT | 13.0/65-18<br>IMP E7 Grip<br>Tubeless 12PR | 310             | 1910                            |  |
|                  | M26.2/30.2               | All purpose          | FRONT | 13.00 R 24<br>XGLA<br>Tubeless             | 335             | 2070                            |  |
|                  | M26.2<br>M30.2           | Agricultural version | REAR  | 10,5/80 - 18 TG 42                         | 275             | 1795                            |  |
|                  | M26.2                    | Industrial version   | REAR  | 10 R 17,5 XZT<br>Tubeless 134/132 L        | 265             | 1785                            |  |
|                  | M26.4<br>M30.4           | Agricultural version | REAR  | 12.0 - 18 T86                              | 310             | 2070                            |  |

## Roller masts M26/M30



## Load charts Sliding masts M26/M30





## Roller masts M26/M30

| MASTS                        |        | TYPE OF TRUCK              | OVERALL MAST DOWN | FREE LIFT (mm) | OVERALL MAST EXTENDED (mm) | HEIGHT AT MAXIMUM CAPACITY (mm) |                            | CAPACITY AT MAXIMUM HEIGHT (mm) |                            | MAST TILT ANGLE FRONT / REAR |
|------------------------------|--------|----------------------------|-------------------|----------------|----------------------------|---------------------------------|----------------------------|---------------------------------|----------------------------|------------------------------|
|                              |        |                            |                   |                |                            | with sideshift carriage         | without sideshift carriage | with sideshift carriage         | without sideshift carriage |                              |
| Duplex all round visibility  | 3.00 m | M26.2/M26.4<br>M30.2/M30.4 | 2540              | 130            | 4115                       | 3000<br>3000                    | 3000<br>3000               | 2600<br>3000                    | 2600<br>3000               | 6°/12°                       |
|                              | 3.30 m | M26.2/M26.4<br>M30.2/M30.4 | 2540              | 130            | 4415                       | 3300<br>3300                    | 3300<br>3300               | 2600<br>3000                    | 2600<br>3000               | 6°/12°                       |
|                              | 3.50 m | M26.2/M26.4<br>M30.2/M30.4 | 2625              | 130            | 4615                       | 3500<br>3500                    | 3500<br>3500               | 2600<br>3000                    | 2600<br>3000               | 6°/12°                       |
|                              | 3.70 m | M26.2/M26.4<br>M30.2/M30.4 | 2785              | 130            | 4815                       | 3700<br>3700                    | 3700<br>3700               | 2600<br>3000                    | 2600<br>3000               | 6°/12°                       |
|                              | 4.00 m | M26.2/M26.4<br>M30.2/M30.4 | 2975              | 130            | 5115                       | 4000<br>4000                    | 4000<br>4000               | 2600<br>3000                    | 2600<br>3000               | 6°/12°                       |
|                              | 4.50 m | M26.2/M26.4<br>M30.2/M30.4 | 3225              | 130            | 5615                       | 4000<br>4000                    | 4000<br>4000               | 2400<br>2800                    | 2500<br>2900               | 6°/12°                       |
|                              | 5.00 m | M26.2/M26.4<br>M30.2/M30.4 | 3475              | 130            | 6115                       | 4000<br>4000                    | 4000<br>4000               | 2000<br>2300                    | 2200<br>2500               | 6°/12°                       |
| Duplex free lift             | 3.00 m | M26.2/M26.4<br>M30.2/M30.4 | 2540              | 1383           | 4032                       | 3000<br>3000                    | 3000<br>3000               | 2600<br>3000                    | 2600<br>3000               | 6°/12°                       |
|                              | 3.30 m | M26.2/M26.4<br>M30.2/M30.4 | 2540              | 1533           | 4332                       | 3000<br>3300                    | 3300<br>3300               | 2600<br>3000                    | 2600<br>3000               | 6°/12°                       |
|                              | 3.50 m | M26.2/M26.4<br>M30.2/M30.4 | 2625              | 1633           | 4532                       | 3500<br>3500                    | 3500<br>3500               | 2600<br>3000                    | 2600<br>3000               | 6°/12°                       |
|                              | 3.70 m | M26.2/M26.4<br>M30.2/M30.4 | 2785              | 1793           | 4732                       | 3700<br>3700                    | 3700<br>3700               | 2600<br>3000                    | 2600<br>3000               | 6°/12°                       |
|                              | 4.00 m | M26.2/M26.4<br>M30.2/M30.4 | 2975              | 1983           | 5032                       | 4000<br>4000                    | 4000<br>4000               | 2600<br>3000                    | 2600<br>3000               | 6°/12°                       |
|                              | 4.50 m | M26.2/M26.4<br>M30.2/M30.4 | 3225              | 2233           | 5532                       | 4000<br>4000                    | 4000<br>4000               | 1600<br>1800                    | 1800<br>2000               | 6°/12°                       |
| Triplex all round visibility | 5.50 m | M26.2/M26.4<br>M30.2/M30.4 | 3055              | -              | 6725                       | 4000<br>4000                    | 4000<br>4000               | 1600<br>1800                    | 1800<br>2000               | 6°/12°                       |
| Triplex free lift            | 3.70 m | M26.2/M26.4<br>M30.2/M30.4 | 2540              | 1283           | 4732                       | 3700<br>3700                    | 3700<br>3700               | 2600<br>3000                    | 2600<br>3000               | 6°/12°                       |
|                              | 4.00 m | M26.2/M26.4<br>M30.2/M30.4 | 2540              | 1383           | 5032                       | 4000<br>4000                    | 4000<br>4000               | 1600<br>1800                    | 1800<br>2000               | 6°/12°                       |
|                              | 4.30 m | M26.2/M26.4<br>M30.2/M30.4 | 2540              | 1533           | 5332                       | 4000<br>4000                    | 4300<br>4300               | 2500<br>2900                    | 2600<br>3000               | 6°/12°                       |
|                              | 4.70 m | M26.2/M26.4<br>M30.2/M30.4 | 2625              | 1633           | 5732                       | 4000<br>4000                    | 4000<br>4000               | 2200<br>2600                    | 2400<br>2800               | 6°/12°                       |
|                              | 5.00 m | M26.2/M26.4<br>M30.2/M30.4 | 2785              | 1793           | 6032                       | 4000<br>4000                    | 4000<br>4000               | 2000<br>2300                    | 2800<br>2500               | 6°/12°                       |
|                              | 5.50 m | M26.2/M26.4<br>M30.2/M30.4 | 2975              | 1983           | 6532                       | 4000<br>4000                    | 4000<br>4000               | 1600<br>1800                    | 1800<br>2000               | 6°/12°                       |
|                              | 6.00 m | M26.2/M26.4<br>M30.2/M30.4 | 3225              | 2233           | 7032                       | 4000<br>4000                    | 4000<br>4000               | 1200<br>1400                    | 1400<br>1600               | 6°/12°                       |

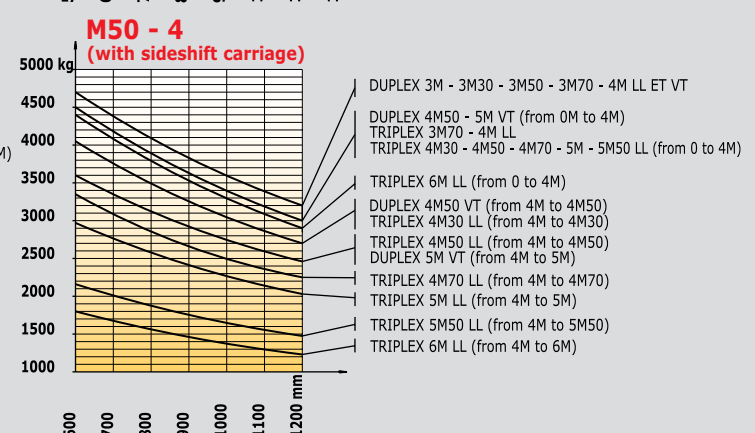
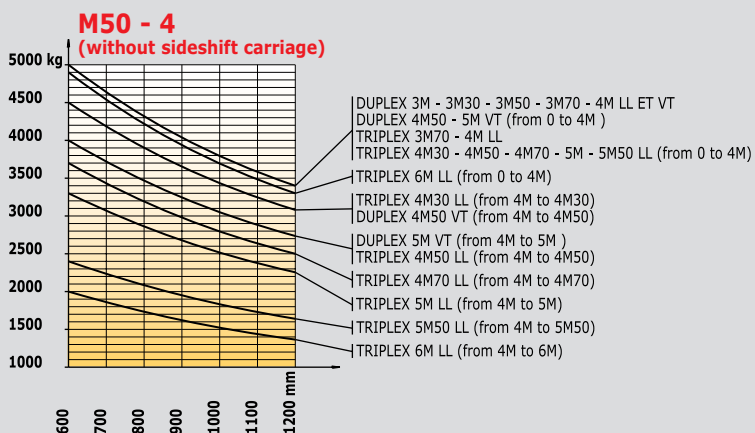
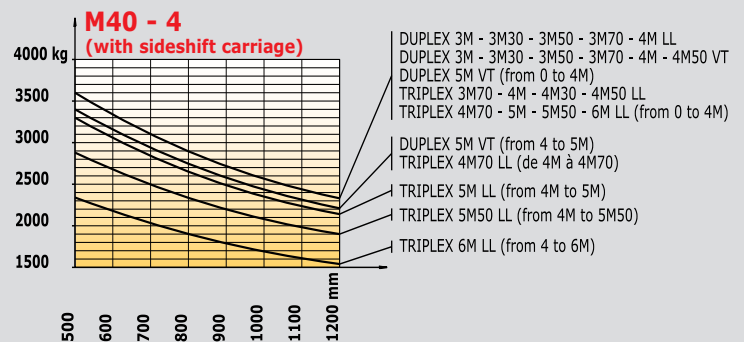
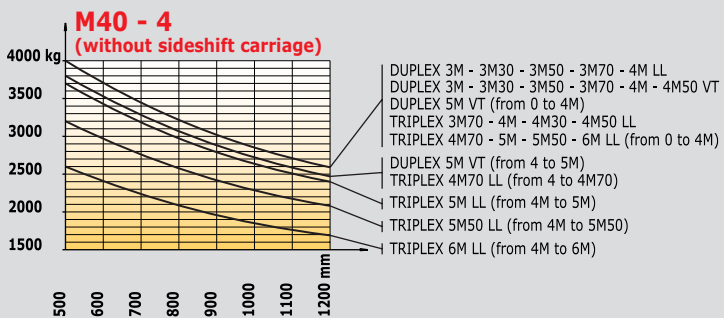
## Sliding masts M26/M30

| MATS                         |                            | TYPE OF TRUCK              | OVERALL MAST DOWN | FREE LIFT (mm) | OVERALL MAST EXTENDED (mm) | HEIGHT AT MAXIMUM CAPACITY (mm) |                            | CAPACITY AT MAXIMUM HEIGHT (mm) |                            | MAST TILT ANGLE FRONT / REAR |
|------------------------------|----------------------------|----------------------------|-------------------|----------------|----------------------------|---------------------------------|----------------------------|---------------------------------|----------------------------|------------------------------|
|                              |                            |                            |                   |                |                            | with sideshift carriage         | without sideshift carriage | with sideshift carriage         | without sideshift carriage |                              |
| Duplex all round visibility  | 3.00 m                     | M26.2/M26.4<br>M30.2/M30.4 | 2625              | -              | 4125                       | 3000<br>3000                    | 3000<br>3000               | 2350<br>2700                    | 2600<br>3000               | 6°/12°                       |
|                              | 3.60 m                     | M26.2/M26.4<br>M30.2/M30.4 | 2925              | -              | 4725                       | 3600<br>3600                    | 3600<br>3600               | 2350<br>2700                    | 2600<br>3000               | 6°/12°                       |
|                              | 4.00 m                     | M26.2/M26.4<br>M30.2/M30.4 | 3125              | -              | 5125                       | 4000<br>4000                    | 4000<br>4000               | 2350<br>2700                    | 2600<br>3000               | 6°/12°                       |
|                              | 4.50 m                     | M26.2/M26.4<br>M30.2/M30.4 | 3475              | -              | 5725                       | 4000<br>4000                    | 4500<br>4500               | 2150<br>2450                    | 2350<br>2700               | 6°/12°                       |
| Triplex all round visibility | 4.50 m                     | M26.2/M26.4<br>M30.2/M30.4 | 2540              | -              | 5540                       | 4500<br>4500                    | 3600<br>3600               | 2050<br>2450                    | 2250<br>2700               | 6°/12°                       |
|                              | 5.40 m                     | M26.2/M26.4<br>M30.2/M30.4 | 2930              | -              | 6530                       | 3600<br>3600                    | 3600<br>3600               | 1450<br>1600                    | 1600<br>1750               | 6°/12°                       |
| Triplex free lift            | 4.55 m<br>Central cylinder | M26.2/M26.4<br>M30.2/M30.4 | 2390              | 1450           | 5490                       | 1450<br>1450                    | 1450<br>1450               | 2050<br>2420                    | 2300<br>2700               | 6°/12°                       |



## Roller masts - Load charts M40/50 - 4

| MASTS                |        | TYPE OF TRUCK  | OVERALL MAST DOWN | FREE LIFT (mm) | OVERALL MAST EXTENDED (mm) | HEIGHT AT MAXIMUM CAPACITY (mm) |                            | CAPACITY AT MAXIMUM HEIGHT (mm) |                            | MAST TILT ANGLE FRONT / REAR |
|----------------------|--------|----------------|-------------------|----------------|----------------------------|---------------------------------|----------------------------|---------------------------------|----------------------------|------------------------------|
|                      |        |                |                   |                |                            | with sideshift carriage         | without sideshift carriage | with sideshift carriage         | without sideshift carriage |                              |
| all round visibility | 3.00 m | M40.4<br>M50.4 | 2560              |                | 4115                       | 3000<br>3000                    | 3000<br>3000               | 3600<br>4700                    | 4000<br>5000               | 15°/15°                      |
|                      | 3.30 m | M40.4<br>M50.4 | 2710              |                | 4415                       | 3300<br>3300                    | 3300<br>3300               | 3600<br>4700                    | 4000<br>5000               | 15°/15°                      |
|                      | 3.50 m | M40.4<br>M50.4 | 2810              | -              | 4615                       | 3500<br>3500                    | 3500<br>3500               | 3600<br>4700                    | 4000<br>5000               | 15°/15°                      |
|                      | 3.70 m | M40.4<br>M50.4 | 2910              | -              | 4815                       | 3700<br>3700                    | 3700<br>3700               | 3600<br>4700                    | 4000<br>5000               | 15°/15°                      |
|                      | 4.00 m | M40.4<br>M50.4 | 3060              | -              | 5115                       | 4000<br>4000                    | 4000<br>4000               | 3600<br>4700                    | 4000<br>5000               | 15°/15°                      |
|                      | 4.50 m | M40.4<br>M50.4 | 3305              | -              | 5615                       | 4500<br>4000                    | 4500<br>4000               | 3600<br>4050                    | 4000<br>4500               | 15°/15°                      |
|                      | 5.00 m | M40.4<br>M50.4 | 3560              | -              | 6115                       | 4000<br>4000                    | 4000<br>4000               | 3400<br>3600                    | 3800<br>4000               | 15°/15°                      |
| Duplex free lift     | 3.00 m | M40.4<br>M50.4 | 2585              | 1518<br>1528   | 4117                       | 3000<br>3000                    | 3000<br>3000               | 3600<br>4700                    | 4000<br>5000               | 15°/15°                      |
|                      | 3.30 m | M40.4<br>M50.4 | 2735              | 1668<br>1678   | 4417                       | 3300<br>3300                    | 3300<br>3300               | 3600<br>4700                    | 4000<br>5000               | 15°/15°                      |
|                      | 3.50 m | M40.4<br>M50.4 | 2835              | 1768<br>1778   | 4617                       | 3500<br>3500                    | 3500<br>3500               | 3600<br>4700                    | 4000<br>5000               | 15°/15°                      |
|                      | 3.70 m | M40.4<br>M50.4 | 2935              | 1868<br>1878   | 4817                       | 3700<br>3700                    | 4000<br>4000               | 3600<br>4700                    | 4000<br>5000               | 15°/15°                      |
|                      | 4.00 m | M40.4<br>M50.4 | 3085              | 1968<br>1978   | 5517                       | 4000<br>4000                    | 4000<br>4000               | 3600<br>4700                    | 4000<br>5000               | 15°/15°                      |
| Triplex free lift    | 3.70 m | M40.4<br>M50.4 | 2485              | 1255<br>1265   | 4805                       | 3700<br>3700                    | 3700<br>3700               | 3600<br>4500                    | 4000<br>5000               | 15°/15°                      |
|                      | 4.00 m | M40.4<br>M50.4 | 2485              | 1355<br>1365   | 5105                       | 4000<br>4000                    | 4000<br>4000               | 3600<br>4500                    | 4000<br>5000               | 15°/15°                      |
|                      | 4.30 m | M40.4<br>M50.4 | 2510              | 1455<br>1465   | 5405                       | 4300<br>4000                    | 4300<br>4000               | 3600<br>4050                    | 4000<br>4500               | 15°/15°                      |
|                      | 4.50 m | M40.4<br>M50.4 | 2585              | 1530<br>1540   | 5605                       | 4500<br>4000                    | 4500<br>4000               | 3600<br>3600                    | 4000<br>4000               | 15°/15°                      |
|                      | 4.70 m | M40.4<br>M50.4 | 2645              | 1590<br>1600   | 5805                       | 4000<br>4000                    | 4000<br>4000               | 3400<br>3350                    | 3800<br>3700               | 15°/15°                      |
|                      | 5.00 m | M40.4<br>M50.4 | 2760              | 1705<br>1715   | 6105                       | 4000<br>4000                    | 4000<br>4000               | 3300<br>2950                    | 3700<br>3300               | 10°/15°                      |
|                      | 5.50 m | M40.4<br>M50.4 | 2910              | 1855<br>1865   | 6605                       | 4000<br>4000                    | 4000<br>4000               | 2880<br>2150                    | 3200<br>2400               | 10°/15°                      |
|                      | 6.00 m | M40.4<br>M50.4 | 3085              | 2030<br>2040   | 7105                       | 4000<br>4000                    | 4000<br>4000               | 2350<br>1800                    | 2600<br>2000               | 10°/15°                      |





**M26.2/M30.2 : 2-wheel drive**  
**M26.4/M30.4 : 4-wheel drive**  
**M40.4/M50.4 : 4-wheel drive**



**Lifting capability**

M26.2/M26.4 (500 mm).....2600 kg  
M30.2/M30.4 (500 mm).....3000 kg  
M40.4 (500 mm).....4000 kg  
M50.4 (600 mm).....5000 kg



**Standard lifting height**.....3,70 m



**Tyres**

Front:  
M26./M30. ....16,5/85-24 SGI 8 PR  
M40.4/M50.4.....18 R 22,5 XF TUBELESS  
Rear:  
M26.2 .....9.00-16 EM5 10 PR  
M30.2 .....10 R17.5 XZT  
M26.4 / M30.4.....10.5 - 80 R18 TG 42 10PR  
M40.4/M50.4 .....12,5 /80 R 18 XM 37



**Forks (mm)**

Length .....1200  
Width x thickness  
M26/M30 .....125x40  
M 40.4.....150x50  
M 50.4.....150x60



**Multiskid hydraulic brakes with oil bath**



**PERKINS Euro 2 engine**

Type .....1104C 44  
Cubic capacity .....4 cyl. - 4400 cm<sup>3</sup>  
Nominal engine speed .....2200 rpm  
Power (ISO/TR 14396) .....61.5 kW (84 hp)  
Maximum torque .....302 Nm at 1400 rpm  
Direct injection  
Water cooled



**Transmission**

.....Torque converter  
Reversing shift .....electro-hydraulic  
4 forward and reverse gears  
Max. travelling speed\* .....24 km/h  
Hydraulic differential lock M26.2/M30.2  
Electro-hydraulically controlled disconnect  
M26.4/M30.4/M40.4/M50.4



**Hydraulics**

Geared main pump:  
Pressure/flow  
M 26.2/M 26.4 .....185 bar/89 l./mn  
M 30.2/M 30.4 .....185 bar/89 l./mn  
M 40./M 50 .....210 bar/89 l./mn  
Priority Load sensing flow  
divider for steering .....145 bar/89 l./mn



**Capacity**

Cooling system .....13 l  
Engine oil .....8,5 l  
Hydraulic oil .....64 l  
Transmission oil .....15,5 l  
Fuel .....85 l

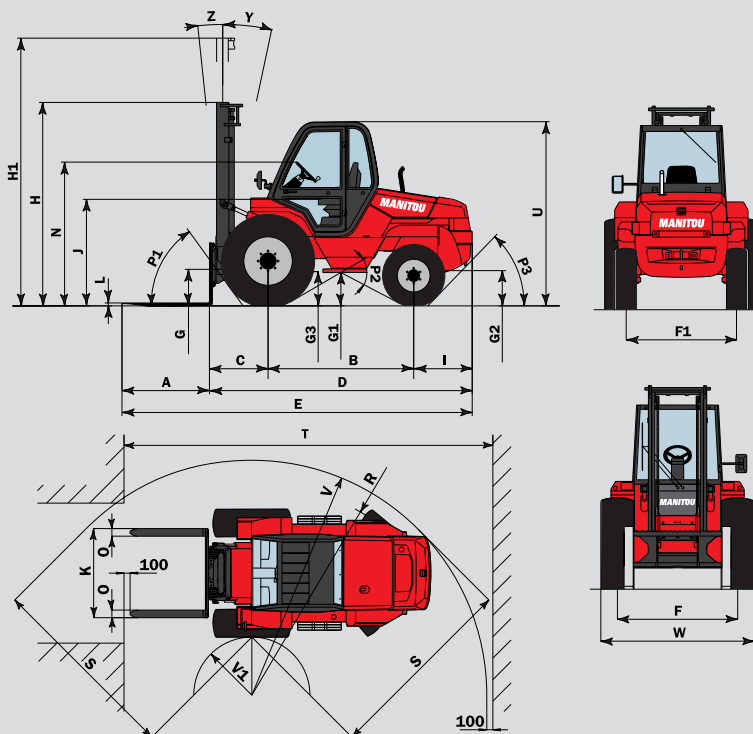


**Weight (with standard mast and forks)**

M26.2 .....5800 kg  
M30.2 .....6100 kg  
M26.4 .....5880 kg  
M30.4 .....6180 kg  
M40.4 .....6700 kg  
M50.4 .....7660 kg

|    | Roller mast    |                |       |       | Sliding mast |       |       |       |
|----|----------------|----------------|-------|-------|--------------|-------|-------|-------|
|    | M26.2<br>M30.2 | M26.4<br>M30.4 | M40.4 | M50.4 | M26.2        | M30.2 | M26.4 | M30.4 |
| A  | 1200           | 1200           | 1200  | 1200  | 1200         | 1200  | 1200  | 1200  |
| B  | 2000           | 2080           | 2124  | 2124  | 2000         | 2000  | 2080  | 2080  |
| C  | 810            | 810            | 762   | 772   | 825          | 830   | 825   | 830   |
| D  | 3635           | 3635           | 3745  | 3755  | 3650         | 3655  | 3650  | 3655  |
| E  | 4835           | 4835           | 4945  | 4955  | 4850         | 4855  | 4850  | 4855  |
| F  | 1650           | 1650           | 1620  | 1620  | 1650         | 1650  | 1650  | 1650  |
| F1 | 1520           | 1760           | 1720  | 1720  | 1520         | 1520  | 1760  | 1760  |
| G  | 495            | 495            | 265   | 265   | 455          | 455   | 455   | 455   |
| G1 | 465            | 395            | 365   | 365   | 465          | 465   | 395   | 395   |
| G2 | 420            | 290            | 290   | 290   | 420          | 420   | 290   | 290   |
| G3 | 480            | 480            | 360   | 360   | 480          | 480   | 480   | 480   |
| H  | 2785           | 2785           | 2910  | 2910  | 2925         | 2925  | 2925  | 2925  |
| H1 | 4815           | 4815           | 4815  | 4815  | 4725         | 4725  | 4725  | 4725  |
| I  | 825            | 745            | 859   | 859   | 745          | 745   | 745   | 745   |
| J  | 1480           | 1480           | 1425  | 1425  | 1480         | 1480  | 1480  | 1480  |
| K  | 1470           | 1470           | 1670  | 1670  | 1320         | 1320  | 1320  | 1320  |
| L  | 40             | 40             | 50    | 60    | 40           | 40    | 40    | 45    |
| N  | 1960           | 1960           | 1925  | 1925  | 1960         | 1960  | 1960  | 1960  |
| O  | 125            | 125            | 150   | 150   | 125          | 125   | 125   | 125   |
| P1 | 54°            | 54°            | 43,5° | 43,5° | 54°          | 54°   | 54°   | 54°   |
| P2 | 58°            | 57,5°          | 50°   | 50°   | 58°          | 58°   | 57,5° | 57,5° |
| P3 | 46°            | 56,5°          | 48,5° | 48,5° | 46°          | 46°   | 56,5° | 56,5° |
| R  | 3730           | 3930           | 3985  | 3985  | 3730         | 3730  | 3930  | 3930  |
| S  | 3215           | 3115           | 3363  | 3363  | 3215         | 3215  | 3115  | 3115  |
| T  | 6140           | 6280           | 6327  | 6327  | 6320         | 6325  | 6295  | 6295  |
| U  | 2540           | 2540           | 2485  | 2485  | 2540         | 2540  | 2540  | 2540  |
| V  | 3930           | 4070           | 4155  | 4155  | 3930         | 3930  | 4070  | 4070  |
| V1 | 1015           | 1350           | 1120  | 1120  | 1015         | 1015  | 1350  | 1350  |
| W  | 2105           | 2105           | 2070  | 2070  | 2105         | 2105  | 2105  | 2105  |
| Y  | 12°            | 12°            | 15°   | 15°   | 12°          | 12°   | 12°   | 12°   |
| Z  | 6°             | 6°             | 15°   | 15°   | 6°           | 6°    | 6°    | 6°    |

mm



**Standard fittings:**

- Enclosed cab with tinted glass
- Fabric seat
- Adjustable steering column
- Heating
- Front and rear windscreen wipers and washers
- Reversing shift on the steering wheel
- Left-hand external rear-view mirror
- Front and rear road lights
- Hydraulic differential lock on the 2-wheel drive versions

**Options**

- Hydraulic differential lock on the 4-wheel drive versions
- Various attachments such as buckets, sideshift carriage, clamps etc
- Audible warning when reversing
- Driver's overhead guard
- Rotating beacon
- Work lights
- Wide carriages



# Manitou, material handling world leader

Inventor of the rough terrain forklift truck, Manitou offers today the most comprehensive range to meet all specific handling and personal lifting requirements :

Telescopic trucks

**MANISCOPIC**

Rough terrain  
and semi industrial  
masted trucks

**MANITOU**

Access  
equipment

**MANIACCESS**

Compact telescopic  
handler

**Twisco**

Truck mounted forklifts

**MANITRANSIT**

Backhoe/Loader  
with telescopic boom

**MANIHOE**

Swinging arm  
and articulated  
wheeled loaders

**MANILOADER**



## A network of skilled professionals at your service

With a network of 500 service and parts centres in more than 100 countries, Manitou provides an efficient after-sales support based on the expertise of 2000 factory trained technicians.

This publication in no way constitutes an offer and the company reserves the right to alter specification without prior notice.  
The MANITOU models presented in this brochure can be supplied complete with optional equipment attachments.



**MANITOU BF SA**

B.P. 249 - 44158 Ancenis Cedex - France  
Tél. : 33 2 40 09 10 11 / Export Department Fax : 33 2 40 09 10 97  
www.manitou.com

700298EN

