

MT-X 1740 SLT

TECHNICAL DATA SHEET




 **MANITOU**

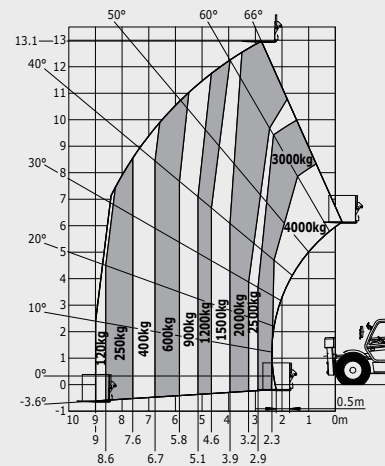
www.manitou.com

MT-X 1740 SLT

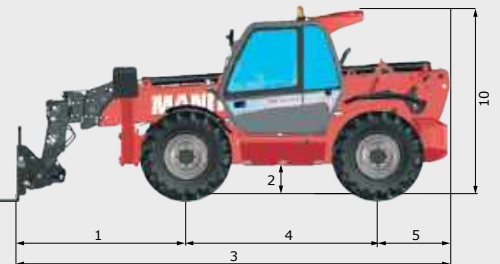
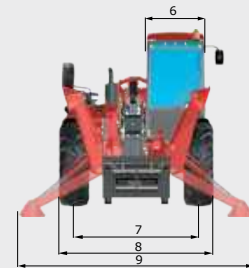
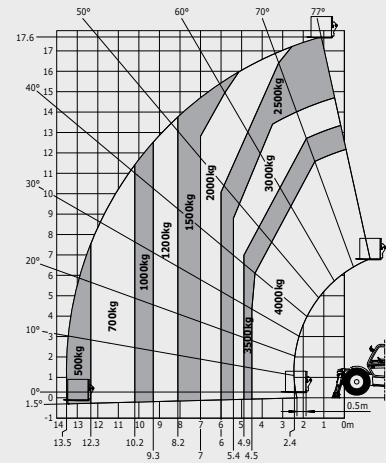
MT-X 1740 SLT

Lifting	
Max. capacity with forks	4000 kg
Max. lifting height	17.60 m
Max. Outreach	13.50 m
Unladen time	
Lifting	14.4 s
Lowering	10.0 s
Extension	24.2 s
Retraction	16.1 s
Crowd	3.5 s
Dump	4.1 s
Tyres	440/80-24
Braking	Oil bath multiple-disc brakes on both axles
Engine	PERKINS
Type	1104D-44 TA
Displacement	4400 cm ³
Power	101 HP / 74.5 kW
Max. torque	410 Nm / 1400 rpm
Injection	direct
Cooling	water
Transmission	
	Torque converter
Drive wheels	4 wheel drive
Steering mode	4 wheel steer - 3 steering Modes 
Reversing shift	electrohydraulic control
Number of gears (forward/reverse)	4/4
Max. travel speed (may vary according to applicable regulations)	27 kph
Hydraulics	
Pump	164 l/min - 260 bar
Capacities	
Hydraulic oil	175 l
Fuel	135 l
Unladen weight (with forks)	11840 kg
Dimensions	
1. Front wheel centre to carriage	2.44 m
2. Ground clearance	0.48 m
3. Overall length to carriage	6.26 m
4. Wheelbase	2.77 m
5. Rear wheel centre to rear face	1.05 m
6. Overall width of cab	0.95 m
7. Inside tyre width	1.99 m
8. Overall width	2.45 m
9. Overall width (stabilizers deployed)	3.82 m
10. Overall height	2.61 m
Standard forks (length x width x thickness)	125x50x1200
Carriage rotation (crowd/dump)	12°/112°
Noise and vibration	
Noise at driving position (LpA)	83.6 dB
Environmental noise (LwA)	106 dB
Vibration to whole hand / arm	<2.5 m/s ²
Vibration on driver's body	1.2 m/s ²

Machine on tyres with forks



Machine on stabilizers with forks



This brochure describes versions and configuration options for Manitou products which may be fitted with different equipment. The equipment described in this brochure may be standard, optional or not available depending on version. Manitou reserves the right to change the specifications shown and described at any time and without prior warning. The manufacturer is not liable for the specifications given. For more information, contact your Manitou dealer. Non-contractual document. Product descriptions may differ from actual products. List of specifications is not comprehensive. The logos and visual identity of the company are the property of Manitou and may not be used without authorisation. All rights reserved. The photos and diagrams contained in this brochure are provided for information only.

MANITOU BF SA - Limited company with board of directors - Share capital: 39,547,824 euros - 857 802 508 RCS Nantes