

Lifts and handles  
items up to 208 kg

# SL 208 Compact

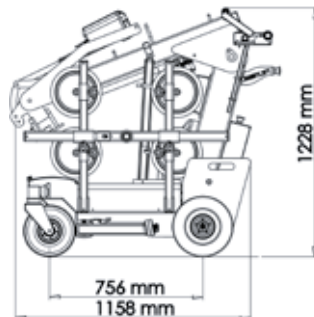
for indoor use

## Can operate in even very cramped areas

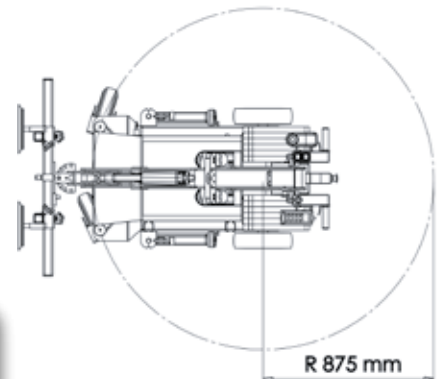


**NEW**  
lifting device

- Two vacuum circuits with two pumps
- Accurate to the millimeter
- Handy and compact
- Self-propelled
- Labour-saving
- Improves work environment
- Tried-and-tested Danish quality



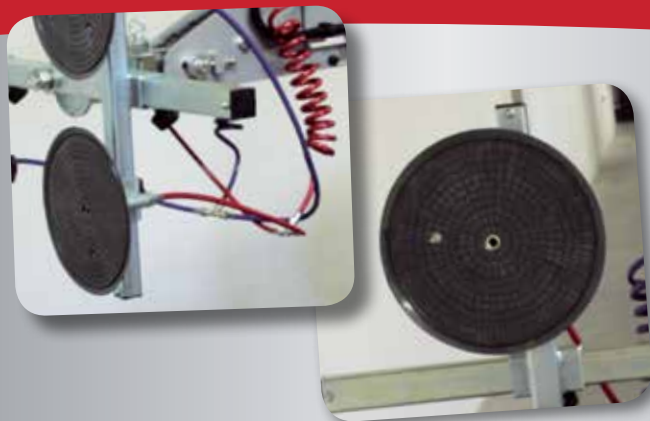
*Easy to retract for transportation in a van or on a trailer.*



*The two powerful 1500 W electric motors mean that the SL 208 Compact can rotate on its own axis. All it requires is a firm surface.*

N.A. Christensensvej 39  
DK-7900 Nykøbing Mors  
Tel: +45 97 72 29 11  
E-mail: [smart@smartlift.dk](mailto:smart@smartlift.dk)  
[www.smartlift.dk](http://www.smartlift.dk)

**Smart Lift**  
DENMARK



The SL 208 Compact comes as standard with lifting yoke, suction cups and dual circuit vacuum system for handling windows etc.

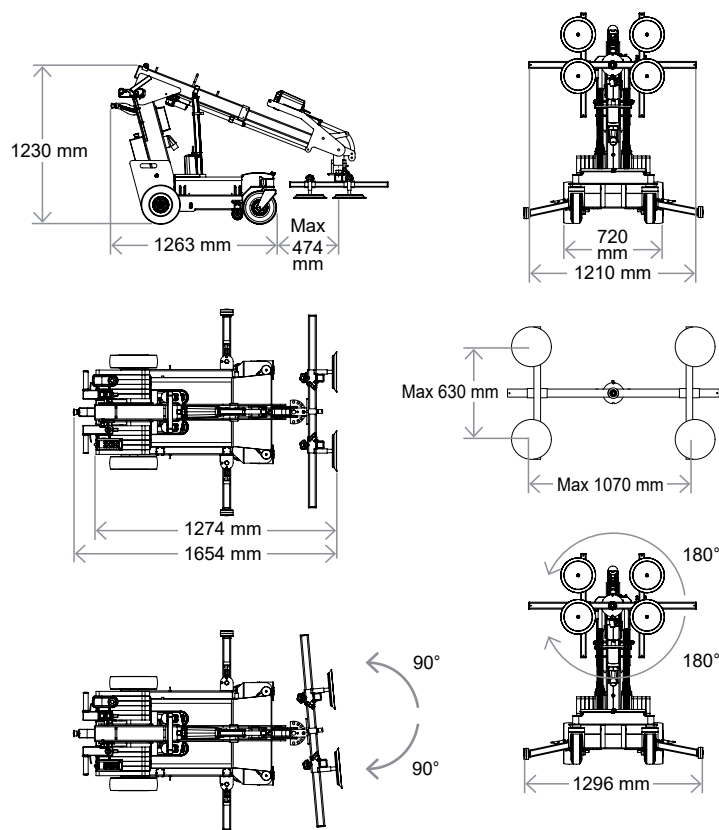
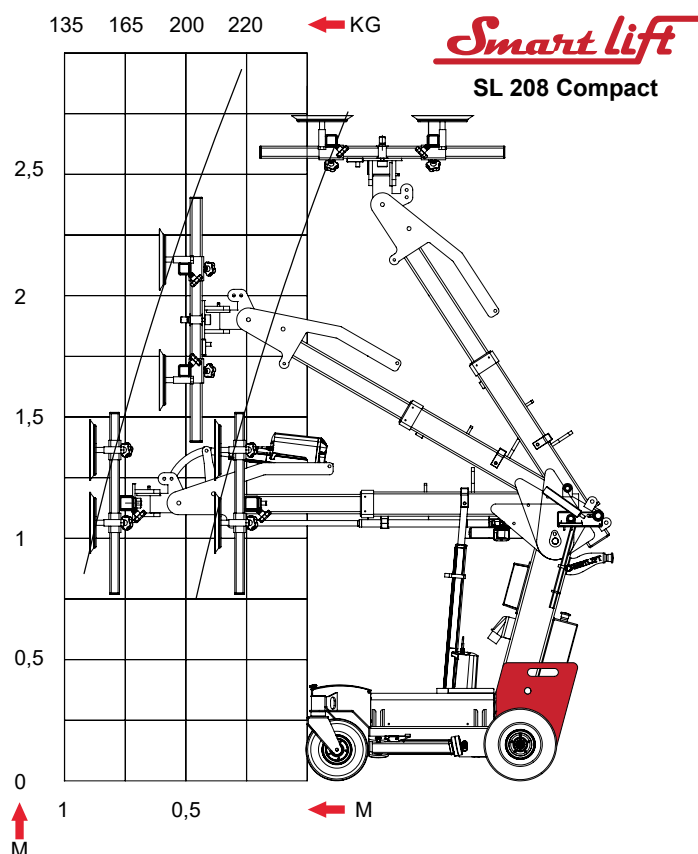


A range of suction cups, extenders, hooks and pallet forks is available as optional extras, meaning the SL 208 Compact can also be used for other types of lifting and handling jobs. Ask for other requirements.

## Technical data

Description	Value
Height	1228 mm
Width (min)	730 mm
Length (min)	1654 mm*
Extension of arm	500 mm
Yoke apex from horizontal	54° back/53° forward
Running speed	Stepless high/low
Turning radius	875 mm
Vacuum system	2 circuits
Lifting height mounting	2740 mm
Charging voltage	230 volt
Charging time	Approx 8 hours
Battery 24 volt (2x12 v)	2 x 70 Ah
Running period	10 hours
Rear wheel drive	2 x 1500 Watt - AC
Brake	Elektronic
Suction pads	4 x Ø250 mm
Lifting capacity arm in/extended	208 kg / 150 kg

\*Length fold up 1370 mm



N.A. Christensensvej 39  
DK-7900 Nykøbing Mors  
Tel.: +45 97 72 29 11  
E-mail: smart@smartlift.dk  
www.smartlift.dk