

Technical sheet :

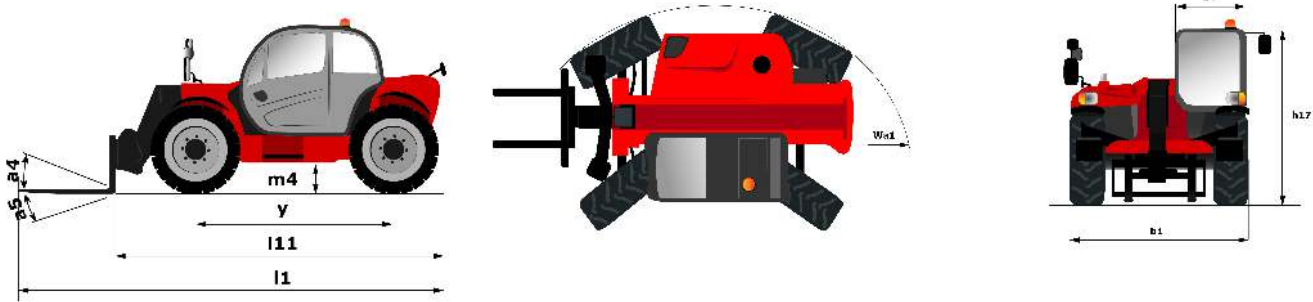
# **MT 1335**

---



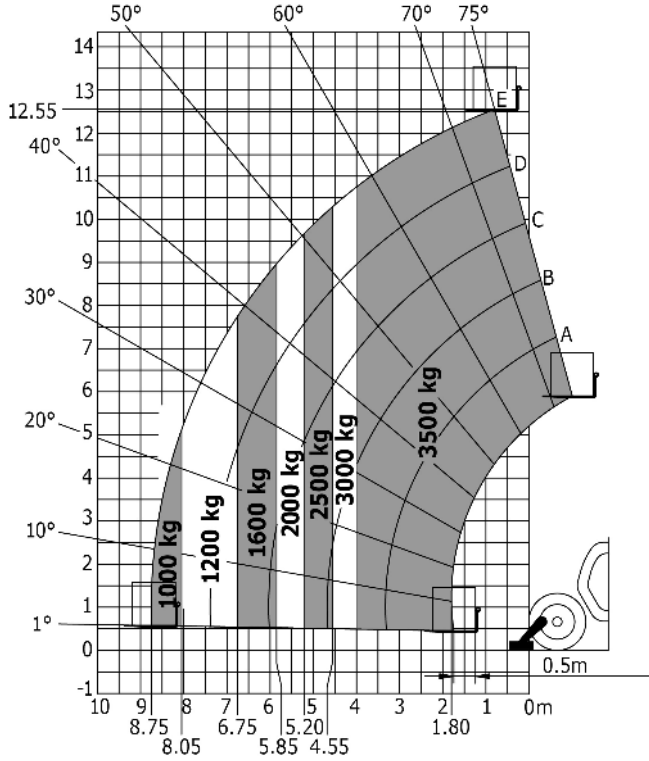
Capacities		Metric	Imperial
Max. capacity	Q	3500 kg	7716 lbs
Max. lifting height	h3	12.55 m	41 ft 2 in
Max. Reach	l4	8.75 m	28 ft 8 in
Breakout force with bucket		5803 daN	5803 daN
Weight and dimensions			
Overall length to carriage	l11	5.86 m	19 ft 3 in
Overall width	b1	2.21 m	7 ft 3 in
Overall height	h17	2.42 m	7 ft 11 in
Wheelbase	y	2.88 m	9 ft 5 in
Ground clearance	m4	0.41 m	1 ft 4 in
Overall cab width	b4	0.88 m	2 ft 11 in
Tilt-up angle	a4	12 °	12 °
Tilt-down angle	a5	114 °	114 °
External turning radius (over tyres)	Wa1	3.65 m	12 ft
Unladen weight (with forks)		9300 kg	20503 lbs
Tyres type		Pneumatic	Pneumatic
Standard tyres		Alliance 400/80 - 24 - 162A8	Alliance 400/80 - 24 - 162A8
Forks length / width / section	l / e / s	1200 mm x 1040 mm x 45 mm	47.244 in x 40.945 in x 1.772 in
Performances			
Lifting		10.2 s	10.2 s
Lowering		8.9 s	8.9 s
Extension		14.6 s	14.6 s
Retraction		10.4 s	10.4 s
Crowd		5 s	5 s
Dump		4 s	4 s
Engine			
Engine brand		Perkins	Perkins
Engine norm		Stage IV	Stage IV
Engine model		854E-34TA	854E-34TA
Number of cylinders / Capacity of cylinders		4 - 3400 cm <sup>3</sup>	4 - 207.48 in <sup>3</sup>
I.C. Engine power rating - Power (kW)		100 Hp / 75 kW	100 Hp / 75 kW
Max. torque / Engine rotation		430 Nm/m @ 1400 tr/min	430 Nm/m @ 1400 tr/min
Drawbar pull (Laden)		9800 daN	9800 daN
Transmission			
Transmission type		Torque Converter	Torque Converter
Number of gears (forward / reverse)		4 / 4	4 / 4
Max. travel speed (may vary according to applicable regulations)		25 km/h	15.5 mph
Parking brake		Automatic parking brake	Automatic parking brake
Service brake		Oil-immersed multi-discs braking on front & rear axles	Oil-immersed multi-discs braking on front & rear axles
Hydraulics			
Hydraulic pump type		Gear pump	Gear pump
Hydraulic flow / Pressure		125 l/min / 270 Bar	125 l/min / 19 PSI
Tank capacities			
Engine oil		7.50 l	1.65 gal
Hydraulic oil		140 l	30.80 gal
Fuel tank		120 l	26.40 gal
DEF tank capacity		12 l	2.64 gal
Noise and vibration			
Noise at driving position (LpA)		78 dB(A)	78 dB(A)
Noise to environment (LWA)		103 dB(A)	103 dB(A)
Vibration on hands/arms		< 2.5 m/s	< 8.2 ft/s
Miscellaneous			
Steering wheels (front / rear)		2 / 2	2 / 2
Drive wheels (front / rear)		2 / 2	2 / 2
Safety / Safety cab homologation		Standard EN 15000 / Cab ROPS - FOPS Level 2	Standard EN 15000 / Cab ROPS - FOPS Level 2
Controls		JSM	JSM

# Dimensional drawing

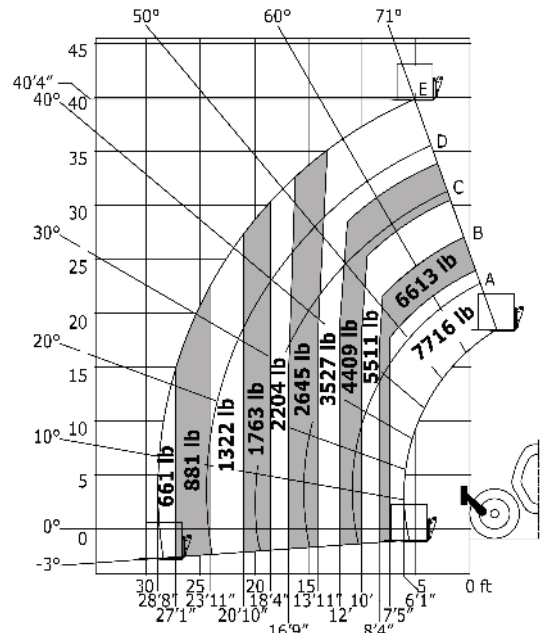


# Load chart

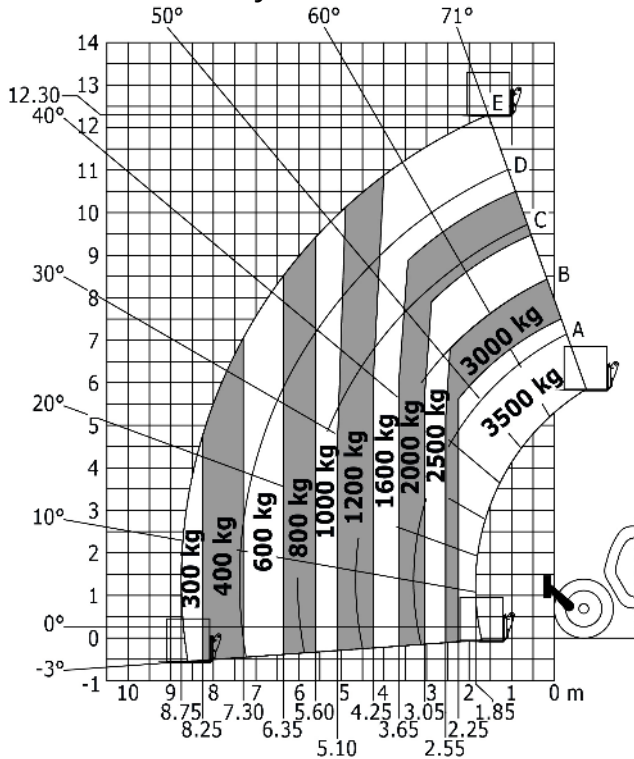
Machine on stabilizers with forks Metric



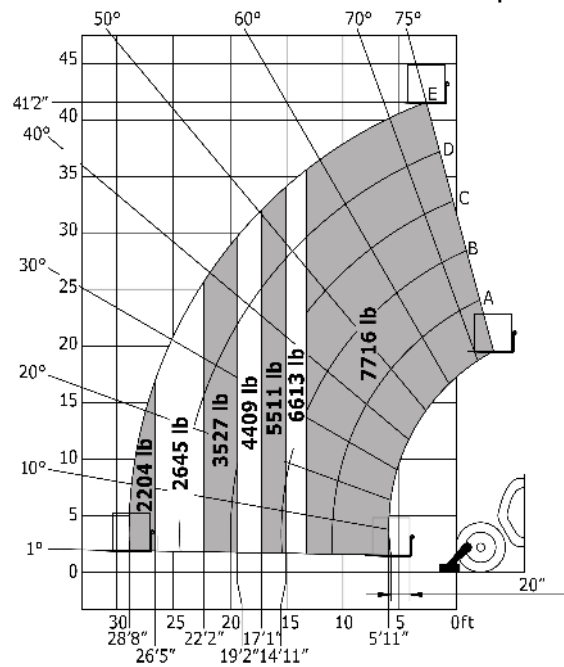
Machine on tyres with forks Imperial



Machine on tyres with forks Metric



Machine on stabilizers with forks Imperial





Siège Social

430 rue de l'Aubinière - 44150 Ancenis Cedex - France

Tel: +33(0)2 40 09 10 11 - Fax: +33 (0)2 40 09 10 97

[www.manitou.com](http://www.manitou.com)



This brochure describes versions and configuration options for Manitou products which may be fitted with different equipment. The equipment described in this brochure may be standard, optional or not available depending on version. Manitou reserves the right to change the specifications shown and described at any time and without prior warning. The manufacturer is not liable for the specifications given. For more information, contact your Manitou dealer. Non-contractual document. Product descriptions may differ from actual products. List of specifications is not comprehensive. The logos and visual identity of the company are the property of Manitou and may not be used without authorisation. All rights reserved. The photos and diagrams contained in this brochure are provided for information only.

MANITOU BF SA - Limited company with board of directors - Share capital: 39,668,399 euros - 857 802 508  
RCS Nantes