

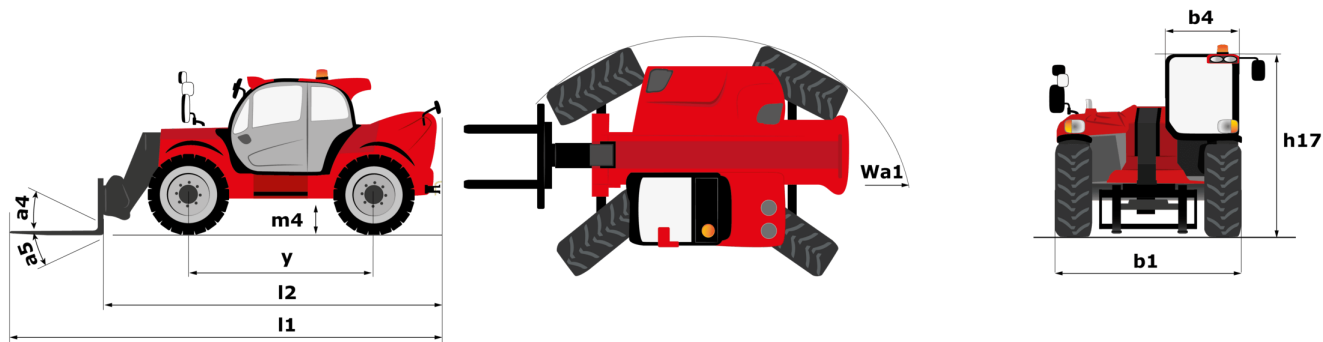
Technical sheet :

# MHT 10130



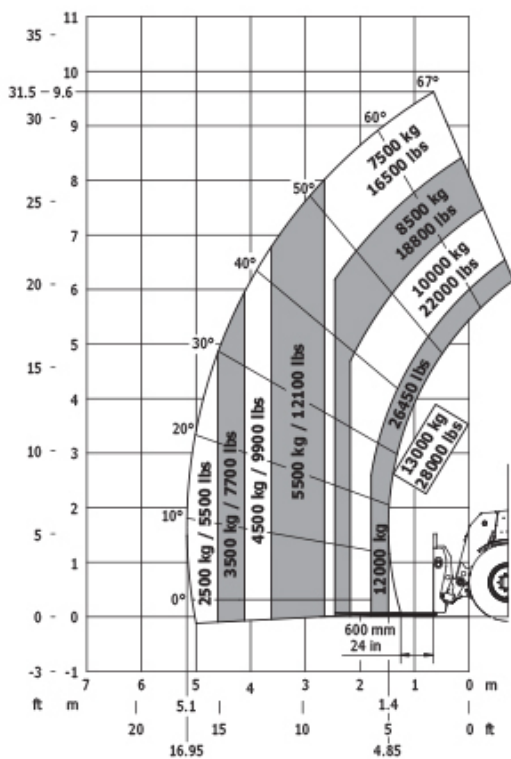
| Capacities                                  |           | Imperial                                       |
|---|-----------|--|
| Max. capacity                               |           | 28660 lb                                       |
| Load centre of gravity                      | c         | 24 in  |
| Max. lifting height                         |           | 31 ft 8 in                                     |
| Max. outreach                               |           | 17 ft  |
| Weight and dimensions                       |           |  |
| Overall length                              | l1        | 20 ft 2 in                                     |
| Unladen weight (with forks)                 |           | 40763 lb                                       |
| Ground clearance                            | m4        | 1 ft 5 in                                      |
| Wheelbase                                   | y         | 11 ft 1 in                                     |
| Overall width                               | b1        | 8 ft 3 in                                      |
| Overall height                              | h17       | 9 ft 10 in                                     |
| Overall cab width                           | b4        | 3 ft 1 in                                      |
| Tilt-down angle                             | a5        | 117 °  |
| Tilt-up angle                               | a4        | 18 °   |
| External turning radius (over tyres)        | Wa1       | 17 ft 6 in                                     |
| Outer turning radius (with forks)           | b15       | 17 ft 6 in                                     |
| Forks length / width / section              | l / e / s | 3 in x 47 in / 8 in                            |
| Wheels                                      |           |  |
| Standard tyres                              |           | Aeolus - A2237 - 17.5 R25                      |
| Number of front wheels / rear wheels        |           | 2 / 2  |
| Steering wheels (front / rear)              |           | 2 / 2  |
| Drive wheels (front / rear)                 |           | 2 / 2  |
| Steering mode                               |           | 2 wheel steer, 4 wheel steer, Crab mode        |
| Engine                                      |           |  |
| Engine brand                                |           | Mercedes                                       |
| Engine nom                                  |           | Stage IV / Tier 4 Final                        |
| Engine model                                |           | OM 934 LA. E4-3                                |
| Number of cylinders / Capacity of cylinders |           | 4 - 311 in <sup>3</sup>                        |
| I.C. Engine power rating / Power (kW)       |           | 176 Hp / 129 kW                                |
| Max. torque / Engine rotation               |           | 750 Nm@1600 rpm                                |
| Engine cooling system                       |           | Water  |
| Number of batteries                         |           | 2  |
| Battery / Batteries capacity                |           | 12 V / 120 Ah                                  |
| Drawbar pull (Laden)                        |           | 10800 daN                                      |
| Transmission                                |           |  |
| Transmission type                           |           | Hydrostatic                                    |
| Number of gears (forward / reverse)         |           | 2 / 2  |
| Max. travel speed                           |           | 19 mi/h  |
| Parking brake                               |           | Automatic negative brake                       |
| Service brake                               |           | Oil-immersed multi-discs on front & rear axles |
| Gradeability (laden)                        |           | 34 %   |
| Hydraulics                                  |           |  |
| Hydraulic pump type                         |           | Variable pump                                  |
| Hydraulic flow - Pressure                   |           | 180 l/min - 4351 PSI                           |
| Tank capacities                             |           |  |
| Engine oil                                  |           | 6 US gal                                       |
| Hydraulic oil                               |           | 77 US gal                                      |
| Fuel tank                                   |           | 83 US gal                                      |
| Diesel Exhaust fluid (AdBlue® type)         |           | 17 US gal                                      |
| Noise and vibration                         |           |  |
| Noise at driving position (LpA)             |           | 80 dB  |
| Noise to environment (LwA)                  |           | 107 dB   |
| Vibration on hands/arms                     |           | < 2.50 m/s <sup>2</sup>                        |
| Miscellaneous                               |           |  |
| Safety cab homologation                     |           | Cabin ROPS - FOPS Level 2                      |
| Controls                                    |           | JSM  |
| Attachment recognition system (E-Reco)      |           | Standard                                       |

### MHT 10130 - Dimensional drawing

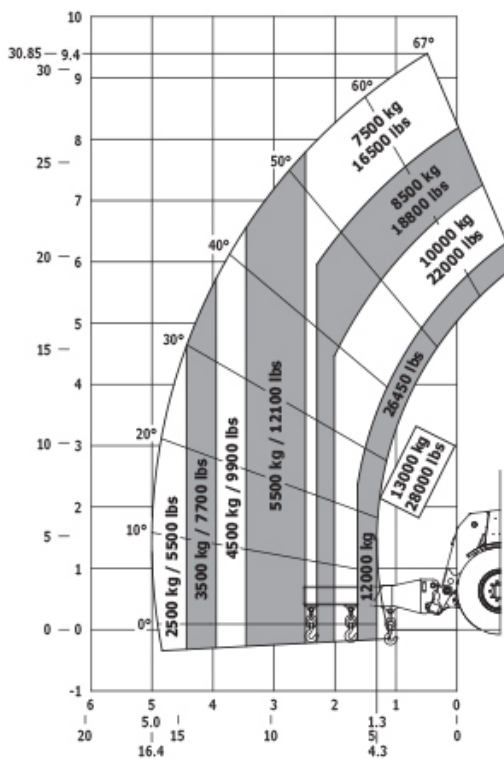


### MHT 10130 - Load chart

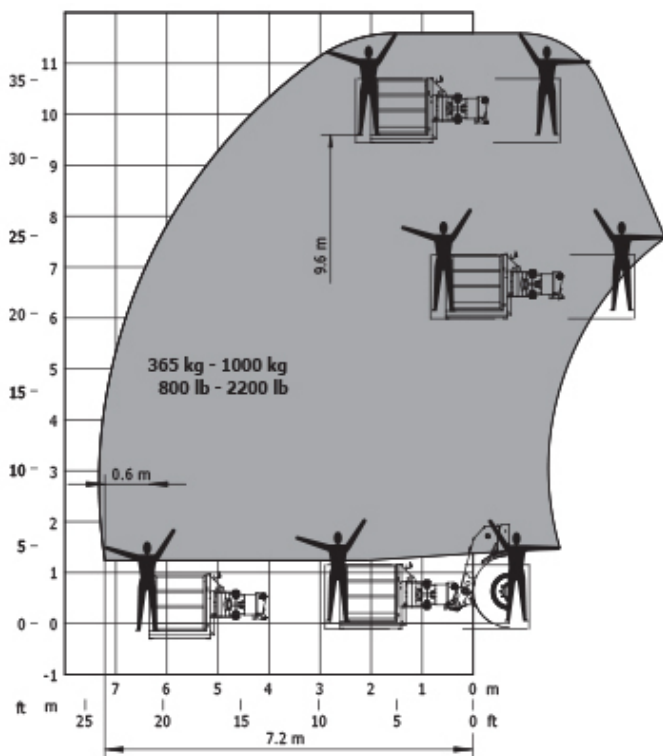
Machine on tyres with forks LC 1200 mm Imperial



Machine on tyres with jib Imperial



### Machine on tyres with platform Imperial





Siège Social

430 rue de l'Aubinière - 44150 Ancenis Cedex - France

Tel: +33(0)2 40 09 10 11 - Fax: +33 (0)2 40 09 10 97

[www.manitou.com](http://www.manitou.com)



This brochure describes versions and configuration options for Manitou products which may be fitted with different equipment. The equipment described in this brochure may be standard, optional or not available depending on version. Manitou reserves the right to change the specifications shown and described at any time and without prior warning. The manufacturer is not liable for the specifications given. For more information, contact your Manitou dealer. Non-contractual document. Product descriptions may differ from actual products. List of specifications is not comprehensive. The logos and visual identity of the company are the property of Manitou and may not be used without authorisation. All rights reserved. The photos and diagrams contained in this brochure are provided for information only.

MANITOU BF SA - Limited company with board of directors - Share capital: 39,668,399 euros - 857 802 508 RCS Nantes