



The electric rotating head makes installs quicker and easier than ever before

## Our Smartlift 609 High Lifter Electric Rotate lifts 600kg

### Main Key Features:

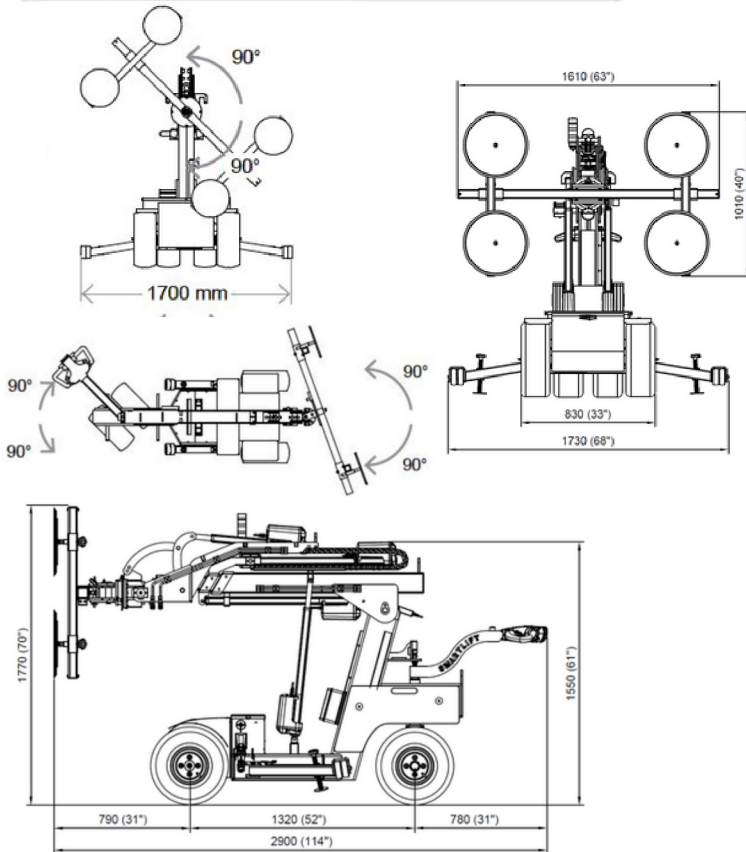
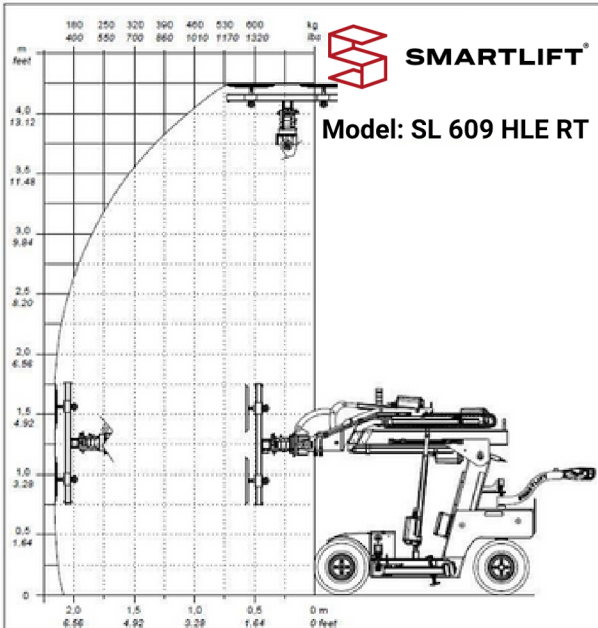
- ✓ Indoor and Outdoor use
- ✓ CAN bus control system
- ✓ Puncture proof balloon tyres
- ✓ 350° electric head rotation
- ✓ 50° swivel head
- ✓ Lifting height 4.25m from center of yoke
- ✓ 2 Sections of Electric Boom Extension
- ✓ Adjustable head for table top lift or canopy install
- ✓ Dual vacuum circuits and pumps
- ✓ 4 fully adjustable suction pads
- ✓ Silicone non marking vacuum pads
- ✓ Vacuum pad covers
- ✓ Variable speed travel controls with high/low
- ✓ Wireless remote control
- ✓ Ergonomic operational handle
- ✓ Easily transported on a trailer or in a van
- ✓ Telescopic boom
- ✓ 100mm side shift
- ✓ Operators manual included
- ✓ Risk assessment included
- ✓ NDT certificate for lifting lugs
- ✓ Workshop tested by Zone Group



The vacuum head has 2 easy settings to allow for adjustment from canopy to table top lift



Machine is equipped with 350-degree electric head rotation. This allows for smooth & controlled manipulation of the load.



## TECHNICAL DATA

DESCRIPTION	VALUE
Lifting cap. arm in/out	600kg/150kg
Lifting height	4250mm
Extension of arm	1600mm
Tilt	32° back/ 83° forward
Side shift	100mm left & right
Vacuum System	2 Circuits
Charging time	Approx. 10hrs
Running period	Up to 10hrs
Charging voltage	230V/110V
Suction pads	4x 400mm diameter
Front-wheel drive	1200 W AC
Brake	Electronic
Speed Regulation	Stepless high/low
Width	830mm
Weight	950kg

Wireless remote control for ALL functions