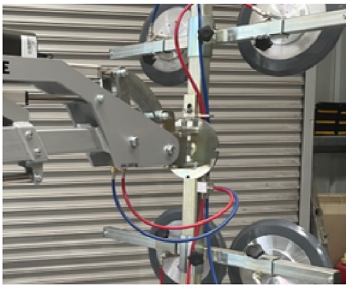




Smartlift allows for easy installation of a range of non-porous material



The vacuum head has 2 easy settings to allow for adjustment from canopy to table top lift

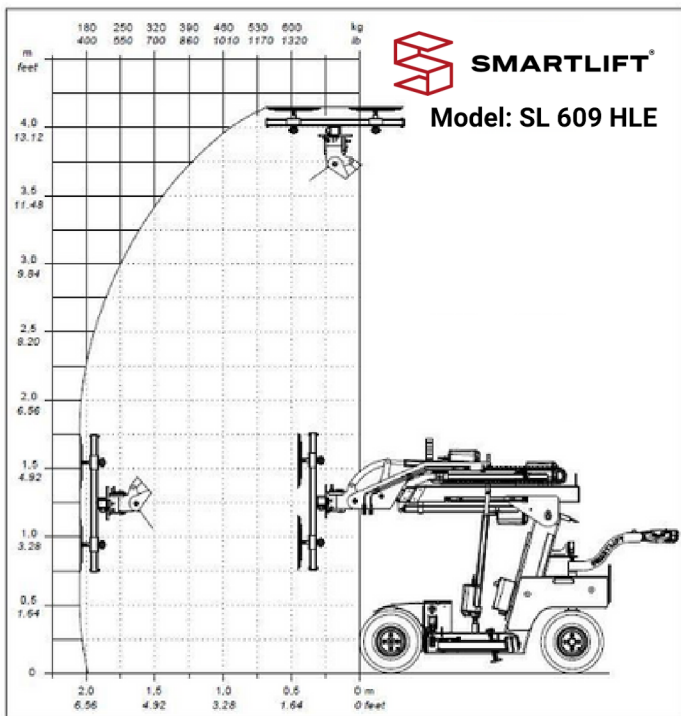


Auto levelling and save/restore functions accessible by using the wireless remote control

## Our Smartlift 609 High Lifter Electric lifts 600kg

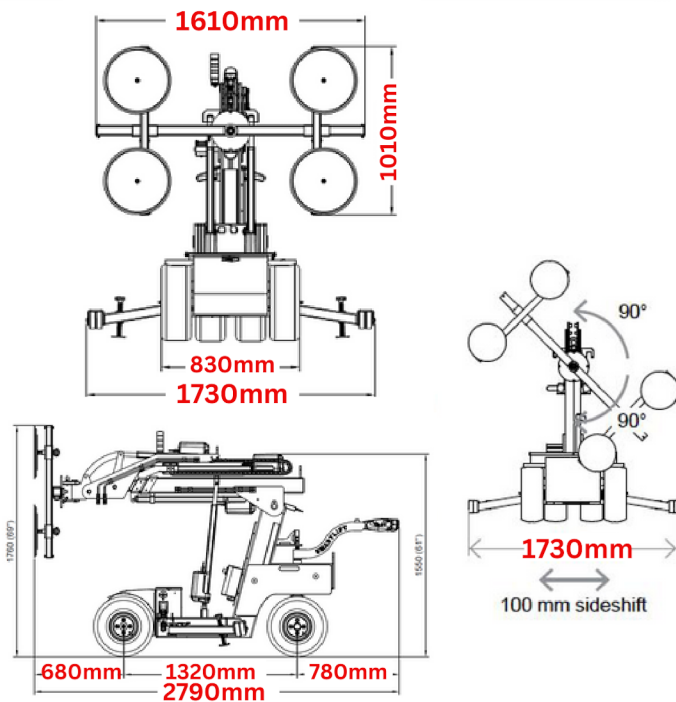
### More Key Features:

- ✓ Off road and front wheel drive
- ✓ CAN bus control system
- ✓ Puncture proof balloon tyres
- ✓ Electric brakes
- ✓ Lifting height 4.15m from center of yoke
- ✓ 2 sections of electric boom extension
- ✓ Dual vacuum circuits and pumps
- ✓ Adjustable head for table top lift
- ✓ 4 fully adjustable suction pads
- ✓ Silicone non marking vacuum pads
- ✓ Vacuum pad covers
- ✓ Variable speed travel controls
- ✓ Multifunctional rotating head
- ✓ Wireless remote control
- ✓ Ergonomic operational handle
- ✓ Easily transported on a trailer or in a van
- ✓ Telescopic boom
- ✓ 100mm side shift
- ✓ Operators manual included
- ✓ Risk assessment included
- ✓ NDT certificate for lifting lugs
- ✓ Workshop tested by Zone Group



## TECHNICAL DATA

DESCRIPTION	VALUE
Lifting cap. arm in/out	600kg/150kg
Lifting height	4150mm
Extension of arm	1600mm
Tilt	32° back/ 85° forward
Side shift	100mm left & right
Vacuum System	2 Circuits
Charging time	Approx. 10 hrs
Running period	Up to 10hrs
Charging voltage	230V/110V
Suction pads	4x 400mm diameter
Front-wheel drive	1200 W
Speed Regulation	Stepless high/low
Brake	Electronic
Width	830mm
Weight	950kg



Diagrams above show machine dimensions and vacuum head movement in all directions.