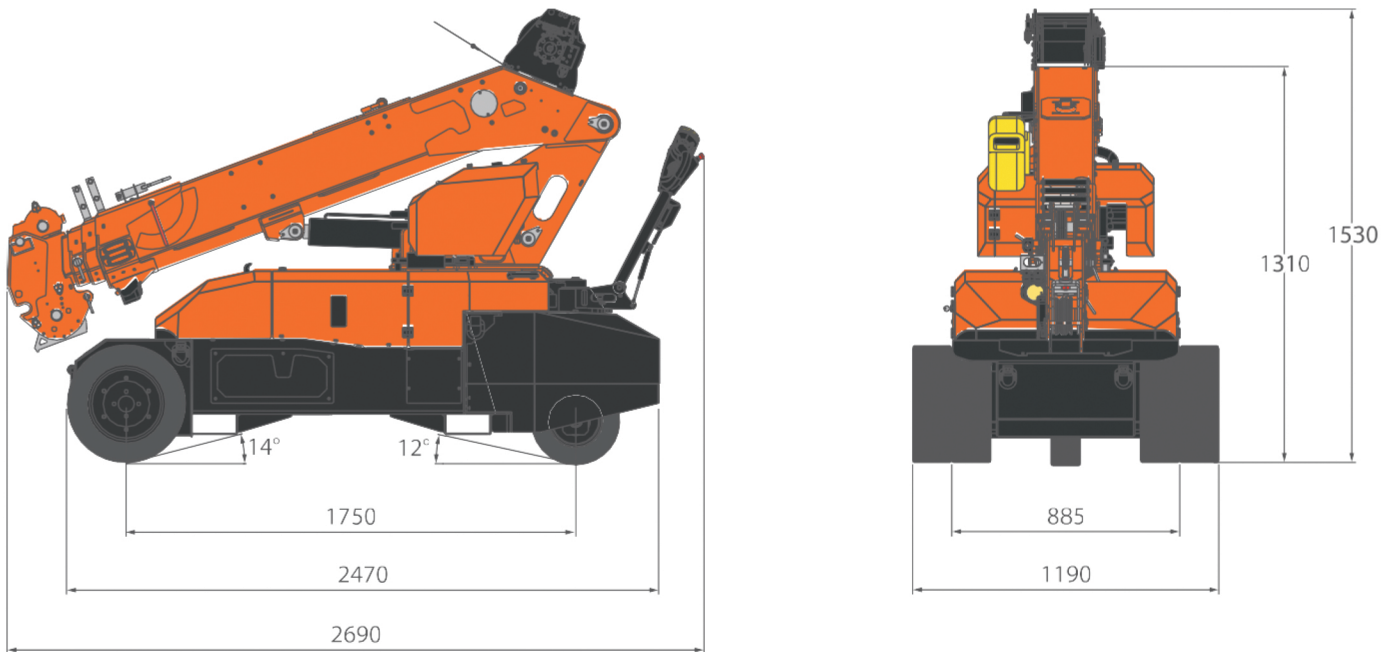
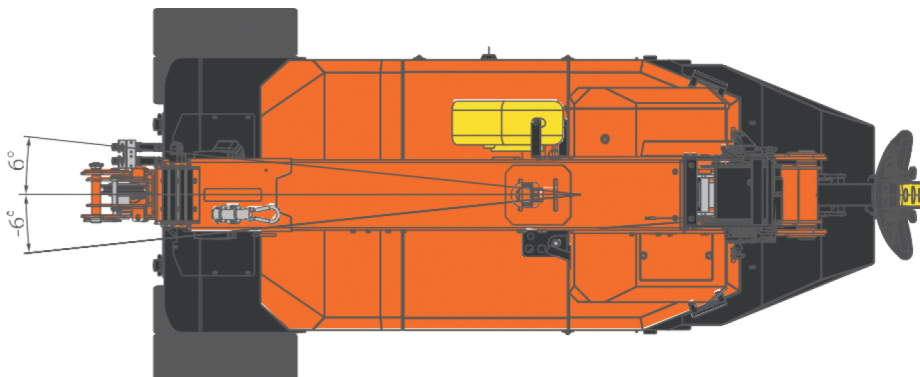


ZONE E20.2 PICK & CARRY CRANE

OVERALL DIMENSIONS













BOOM SWING





[mm]

ZONE E20.2 PICK & CARRY CRANE

INFORMATION

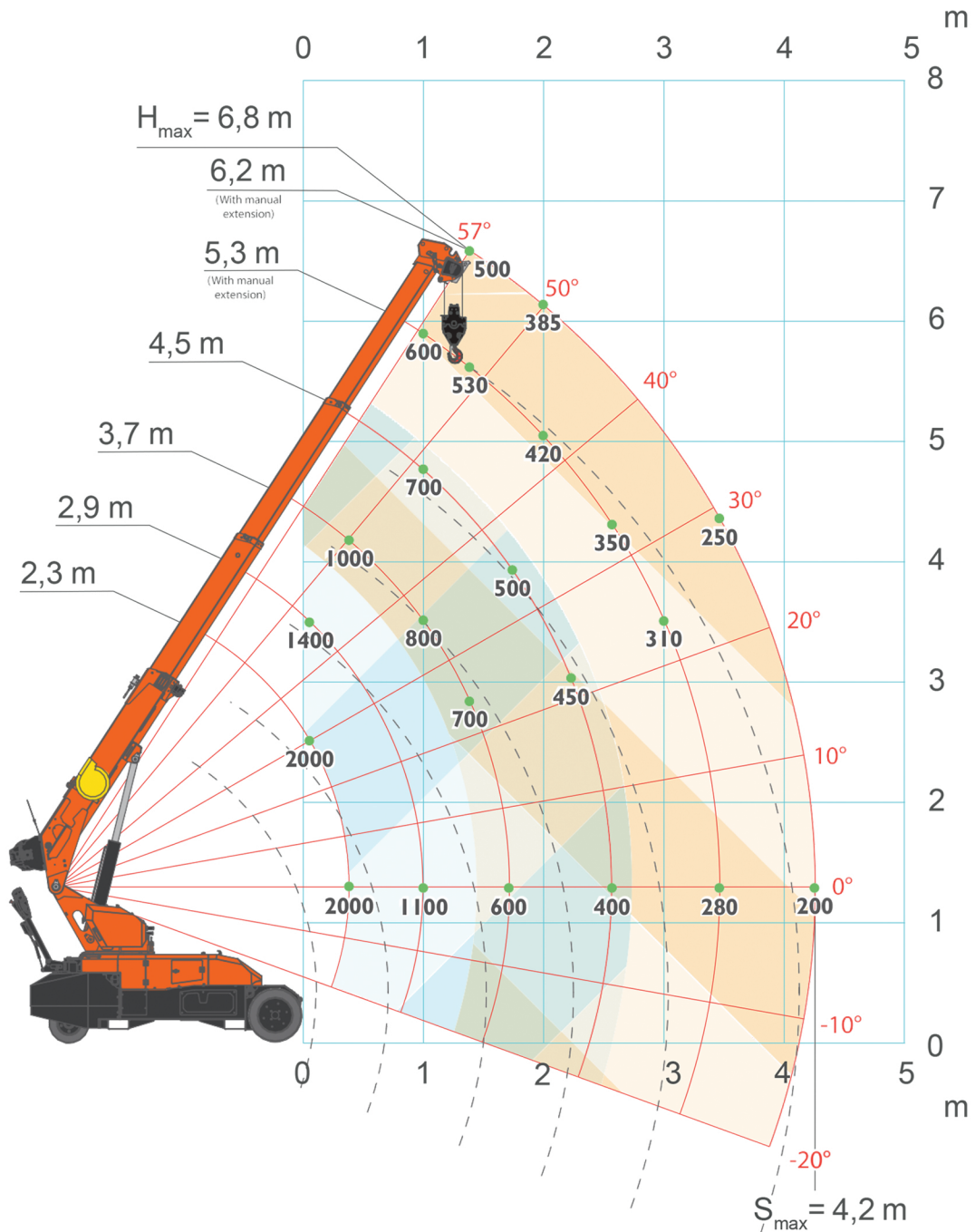
		DESCRIPTION	U.M	VALUE	
kg		OVERALL DIMENSIONS	Height	mm	1.530
			Length		2.690
			Width		1.190
		BOOM	Length	m	2,3/6,2
			Speed	s	32
		SLEWING	Angle	°	-6°/+6°
			Speed	rpm	1
		LIFTING	Working Angle	°	-20°/+57°
			Speed		
		MAX CAPACITY			2.000
		BACK WHEEL MAX LOAD		kg	550*
		FRONT WHEEL MAX LOAD	Turret positioned at 0°		1650†
Turret slewed by 6°			2000†		
	TRAVEL SPEED		km/h	4	
	GRADEABILITY		°	10° (18%)	
	WORKING TEMPERATURE		°C	-20°/+40°	
	Lifting Class (UNI 4301-1)		A1		

WEIGHTS		CRANE	MPK20.2	kg	1440‡
		COUNTERWEIGHT	All	kg	405
		TOTAL	Total weight	kg	1845

ACCESSORIES		JIB	JIB1000.GX	kg	18
		WINCH	W700.60-MPK	kg	60

*: Without Load
†: With load

ZONE E20.2 PICK & CARRY CRANE MAIN BOOM

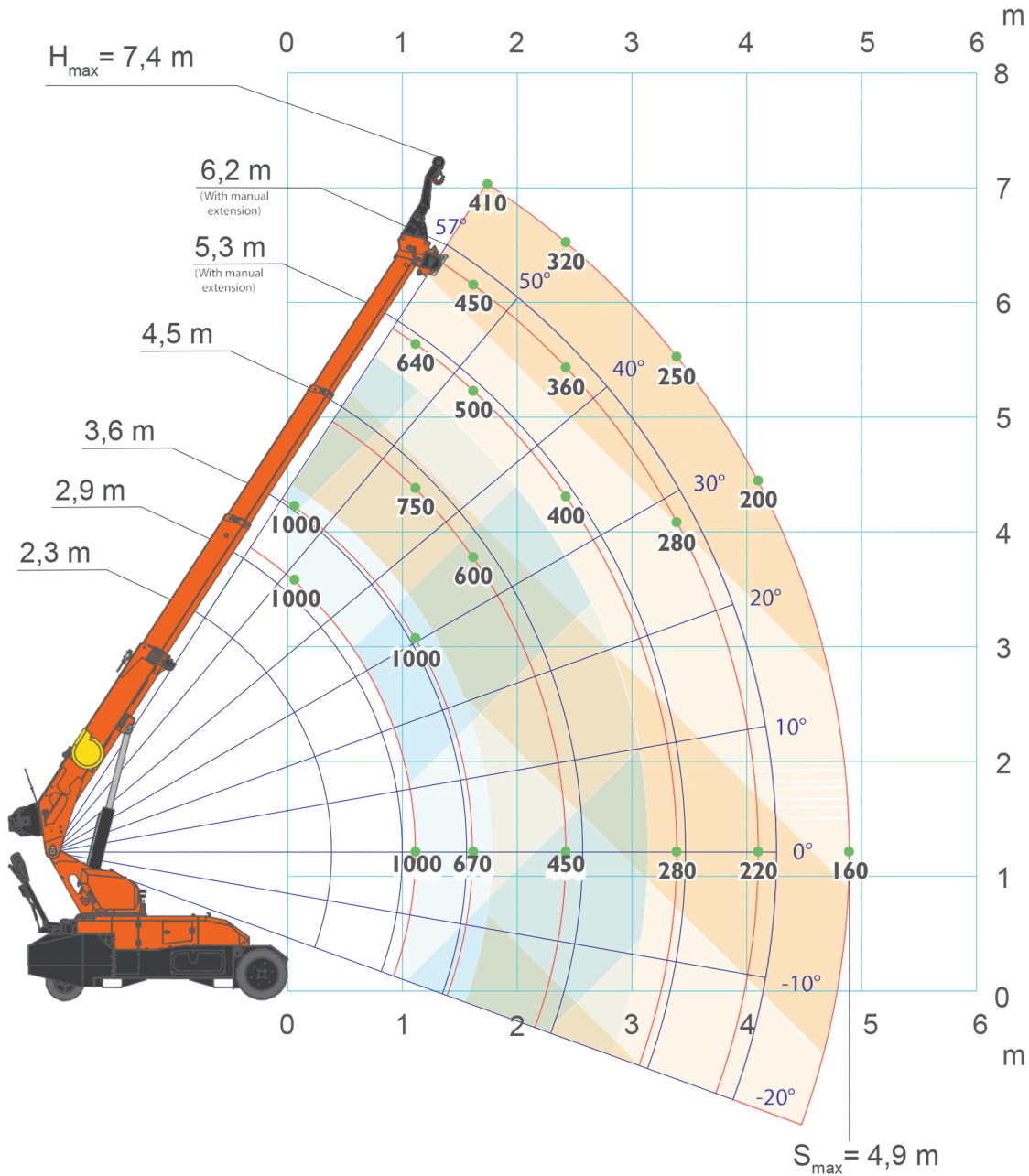


 MAIN BOOM
  MANUAL EXTENSION

[kg]

ZONE E20.2 PICK & CARRY CRANE

JIB1000.GX



[kg]



Request a FREE demonstration today!
www.zoneg.com.au / 1300 099 338
 SALES | HIRE | WET HIRE | SERVICING